

# Intelligent Color Matching



## **MATCHPIGMENT®**

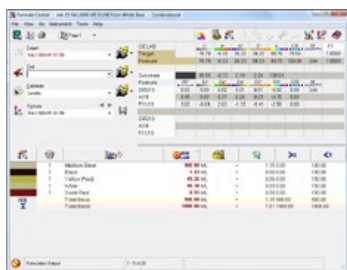


### **Simple and Powerful Color Matching Software**

- Next Generation Matching Algorithms
- Robust, Powerful, and Reliable Database
- Unrivaled Ease-of-Use with “Formula Central”
- Production Ready Formulas
- New Q™ Function
- Exclusive Product Line Maintenance

# MATCHPIGMENT INTELLIGENT COLOR MATCHING

Datacolor Match Pigment is an intelligent color formulation solution for paint, plastic, ink and cosmetics industries, which enables you to generate the best formula for your color quickly and easily, resulting in a more efficient process and greater productivity. Customize your matching with many different criteria, and Datacolor Match Pigment adapts to your workflow.



## FEATURES

- **Next Generation Matching Algorithms** provide faster, more accurate and consistent matching for opaque, transparent, and translucent materials
- **Sybase Database** provides referential integrity, flexible data access and fast performance.
- **New Q™ Function** lets you match an entire palette of colors against multiple sets of matching conditions.
- **Product Line** facility allows you to organize data based on manufacturers, systems, brands, and bases.

*Unrivaled Ease-of-Use with "Formula Central"*  
 Work the way you want with Formula Central, a virtual color laboratory. Match a single sample or an entire folder of standards; then correct, search, retrieve, save, scale, or change units - all on one screen - just the way you want it. Complex matching operations are now simple and intuitive to do.

## FEATURES COMPARISON

	DATACOLOR MATCHPIGMENT	DATACOLOR MATCHPIGMENT PLUS*
Integrated Datacolor TOOLS for Quality Control	-	✓
Integrated Datacolor TOOLS <sup>90C</sup> for Quality Control	✓	-
Data Navigator with explorer-like database views	✓	✓
SmartMatch Technology	✓	✓
Multiple Matching Models: Transparent, Transmission, Translucent, Opaque	✓	✓
Gloss Compensation	✓	✓
Colorant Calibration and Set Administration	✓	✓
User and User Group Permissions by Data Location and Type	✓	✓
Network-ready Database – Database Server Included	✓	✓
Combined Colorant Calibration / Optimized Colorant Calibration	-	✓
Ingredient Priority & Compatibility Values	-	✓
Queue Function (Queue Maintenance, Queue Matching, Queue Viewer) & Scheduling	-	✓
Data Exchange to Datacolor Paint databases	-	✓
Product Line Maintenance	-	✓
Auto-Base select & Matching across colorant sets	-	✓
Pearl® Constraints for Metallic, Effect, Interference Color Matching	-	✓

\* Workstation version of MatchPigment Plus available

WORK FLOW	Design	Photo	Cosmetics	Packaging	Ink	Home Entertainment	Automotive	Plastics	Paint & Coatings	Textile	Retail Paint
Create/Design											
Specify											
Formulate and Produce			■	■	■		■	■	■		■
Quality Control			■	■	■		■	■	■		■

For more information, please visit [www.datacolor.com](http://www.datacolor.com)

### STANDALONE SYSTEM REQUIREMENTS

CRT or LCD monitor, Pentium 4 with Serial or USB connection available, CD Reader, Windows 2000, XP Pro or Vista.

Committed to Excellence. Dedicated to Quality. Certified to ISO 9001:2000 in Manufacturing Centers Worldwide. ©2009 Datacolor Inc. Datacolor and other Datacolor product trademarks are the property of Datacolor Inc. Windows is either a registered trademark of Microsoft Corporation in the United States and/or other countries.

**datacolor**