

Wellheads

according to API 6A

Wellheads according to API 6A for cavern storage, aquifer storage, for gas production, geothermal trees and injection trees up to +350°C (+662°F)

Equipment with maintenance-free, true metal to metal seated valves - manually operated or automated

Central control unit

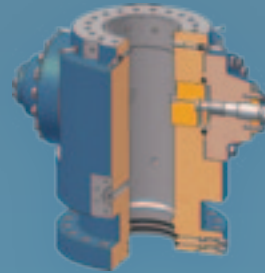
API 6 A valves 1¹³/₁₆" – 13⁵/₈"
API 10.000 PSI WP

Oil field equipment like, rod rotator and polished rods



Tubing Hangers & Adapters

| | |
|------------------------|---|
| API Sizes: | All API Standard Sizes |
| API Pressure Rating: | 2000 PSI, 3000 PSI, 5000 PSI, 10.000 PSI |
| Sealing Systems: | Elastomeric & Metal-to-Metal |
| Control Line: | With & Without Control Line, Continues Control Line |
| API Temperature Class: | K, L, N, P, R, S, T, U |
| API Material Class: | AA, BB, CC, DD, EE, FF, HH (ZZ) |
| API PSL Levels: | PSL 1, PSL 2, PSL 3, PSL 3 G |



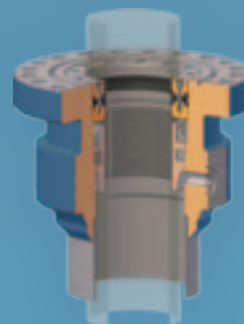
Tension Spool

| | |
|--------------------------|---|
| API Bottom Flange Sizes: | 21 ¹ / ₄ ", 20 ³ / ₄ ", 18 ⁵ / ₈ ", 16 ³ / ₄ ", 13 ⁵ / ₈ ", 11" |
| | Fastlock connection |
| API Top Flange Sizes: | 16 ³ / ₄ ", 13 ⁵ / ₈ ", 11", 9", 7 ¹ / ₁₆ " |
| | Fastlock connection |
| API Pressure Rating: | 2000 PSI, 3000 PSI, 5000 PSI, 10.000 PSI |
| Sealing Systems: | Single-P, Double-P, N-Bushing, NX-Bushing, Metal-to-Metal |
| API Temperature Class: | K, L, N, P, R, S, T, U |
| API Material Class: | AA, BB, CC, DD, EE, FF (ZZ) |
| API PSL Levels: | PSL 1, PSL 2, PSL 3, PSL 3 G |



Casing Spool

| | |
|--------------------------|---|
| API Bottom Flange Sizes: | 21 ¹ / ₄ ", 20 ³ / ₄ ", 18 ⁵ / ₈ ", 16 ³ / ₄ ", 13 ⁵ / ₈ ", 11", Fastlock connection |
| API Top Flange Sizes: | 116 ³ / ₄ ", 13 ⁵ / ₈ ", 11", 9", 7 ¹ / ₁₆ " Fastlock connection |
| API Pressure Rating: | 2000 PSI, 3000 PSI, 5000 PSI, 10.000 PSI |
| Sealing Systems: | Single P-Seal, Double P-Seal, T-Seals, N-Bushing, NX-Bushing, Metal-to-Metal |
| API Temperature Class: | K, L, N, P, R, S, T, U |
| API Material Class: | AA, BB, CC, DD, EE, FF, HH (ZZ) |
| API PSL Levels: | PSL 1, PSL 2, PSL 3, PSL 3 G |



Casing Head Housing

| | |
|------------------------|---|
| Bottom Connections: | Slip On Weld Slip Lock |
| API Top Size Flanges: | 21 ¹ / ₄ ", 20 ³ / ₄ ", 18 ⁵ / ₈ ", 16 ³ / ₄ ", 13 ⁵ / ₈ ", 11", 9 ⁵ / ₈ ", 7 ¹ / ₁₆ " Fastlock connection |
| API Pressure Rating: | 2000 PSI, 3000 PSI, 5000 PSI, 10.000 PSI |
| API Temperature Class: | K, L, N, P, R, S, T, U |
| API Material Class: | AA, BB, CC, DD, EE, FF, HH (ZZ) |
| API PSL Levels: | PSL 1, PSL 2, PSL 3, PSL 3 G |